

Radio & Music Player



User manual

relish.

English

Contents

- | | | | |
|----------|--|-----------|---|
| 4 | Your Relish Radio & Music Player | 9 | Saving your MP3 files onto your USB memory stick
- Downloaded MP3 Audio Files - Windows CD Drive |
| 5 | Getting Started | 11 | Saving your MP3 files onto your USB memory stick
- MP3 Audio Files From CD
- Mac OS |
| 6 | Finding and saving radio stations to Memory Buttons
- FM/DAB+/DAB Radio & Music Player | 12 | Safety Instructions |
| 7 | Saving your MP3 files onto your USB memory stick
- Downloaded MP3 Audio Files - Windows | 13 | Specification |
| | | 13 | Warranty Registration |
| | | 13 | FCC Warning Statement |

Help

1. Please refer to the set up support and FAQ section of the Relish website (www.relish-life.com).

2. You can also view setup support here:

3. If you're still encountering problems, please contact Relish customer service on:

info@relish-life.com



or call:

UK - +44 (0) 203 488 2001
USA - +1 540 405 8541

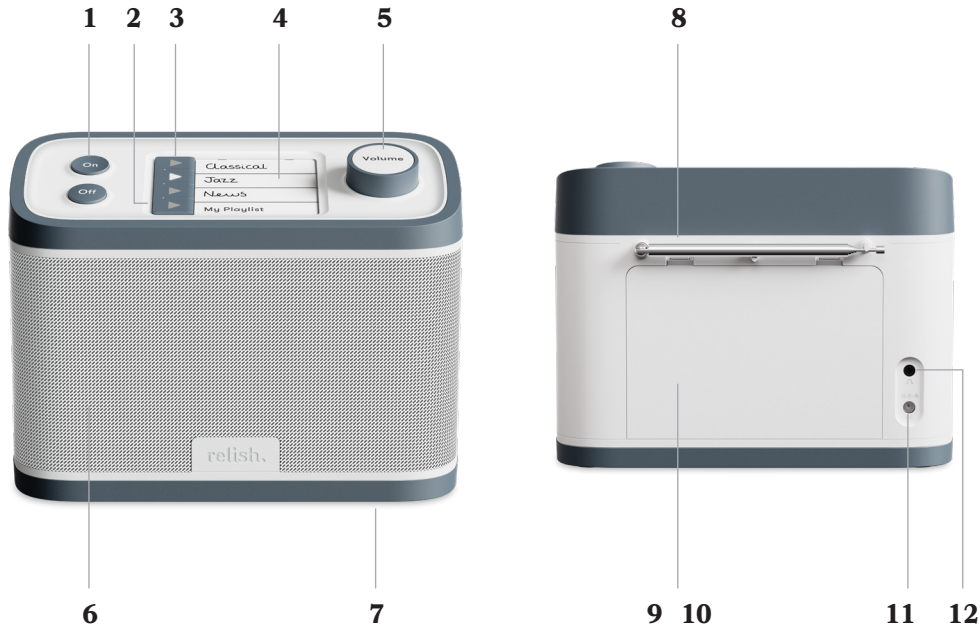
Monday to Friday, 8:30-5:30 GMT

Please have your order number ready. We'll do our best to get back within two working days.

If you would like the manual in French, Spanish or German please contact us for a downloadable pdf.

Your Relish Radio & Music Player

Our unique product has been designed specifically to enable people with all abilities to listen to their favourite music independently.



- | | |
|--|---|
| <p>1 Dedicated on and off buttons</p> <p>2 Playlist button (plays MP3s)</p> <p>3 Radio station memory buttons x 3</p> <p>4 Customisable memory card and transparent cover</p> <p>5 Volume dial</p> <p>6 High quality speaker drivers (2x 3W)</p> <p>7 Non-slip feet x 4</p> | <p>8 Aerial (telescopic)</p> <p>9 Battery door and battery compartment</p> <p>10 Setup controls, display and USB port (hidden behind battery door)</p> <p>11 Power supply input</p> <p>12 Headphone output</p> |
|--|---|

Getting Started

1. Select the appropriate plug for your region.

Use only the supplied power adaptor and plugs (using third-party parts will void your warranty).

2. Connect the power adaptor supplied to the DC power socket on the back of your radio, and plug the mains adaptor into the mains supply.

Alternatively, use 4 x D batteries.

Rotate the aerial to a vertical position and extend to full length.

3. Position the device on a stable surface where it is easy to access.

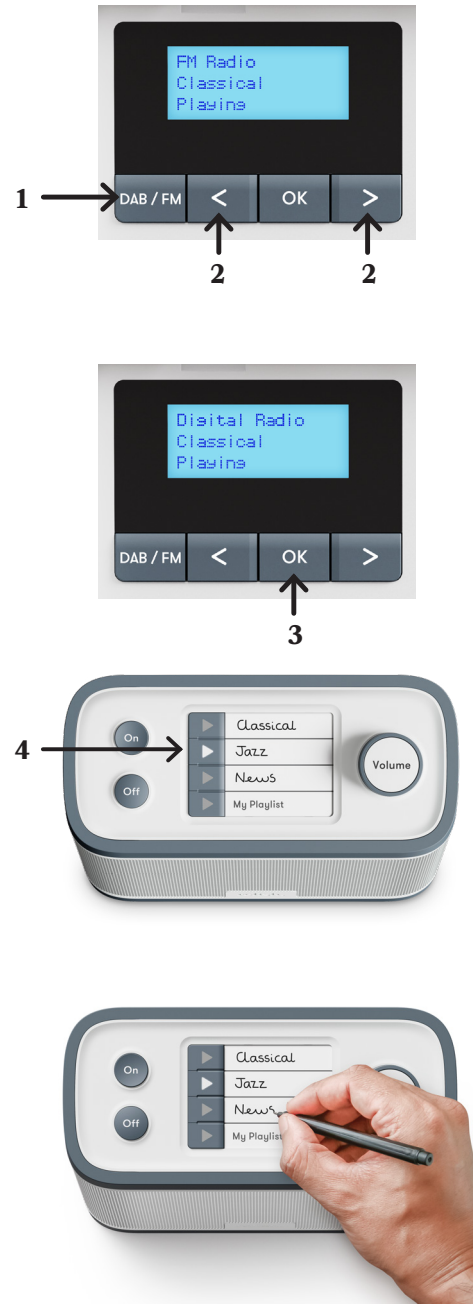
4. Press 'On' to turn on the radio. Make sure the volume is turned up.

5. Remove the battery door on the radio to access the setup controls.



Finding and saving radio stations to Memory Buttons - FM/DAB+/DAB Radio & Music Player

1. Press 'DAB/FM' to switch between FM radio and DAB+ radio modes
2. In FM mode, find the next station by holding down the '<' or '>' button for 3 seconds. Repeat until you find the station you want to save.
3. In DAB+ mode, press and hold 'OK' to auto-scan for stations. When the scan is complete, press the '<' or '>' button to browse through the stations. Press 'OK' to tune into the station you want to listen to (Applies to DAB+ Radio & Music Player version only).
4. Press and hold a memory button for 8 seconds to save the station to it.
5. When the station is saved, remove the plastic cover on the label by bending it slightly, and write a personalised description on the customisable label card. Then, replace the transparent plastic cover.
6. Repeat steps 3 and 4 to set up the remaining two memory buttons.

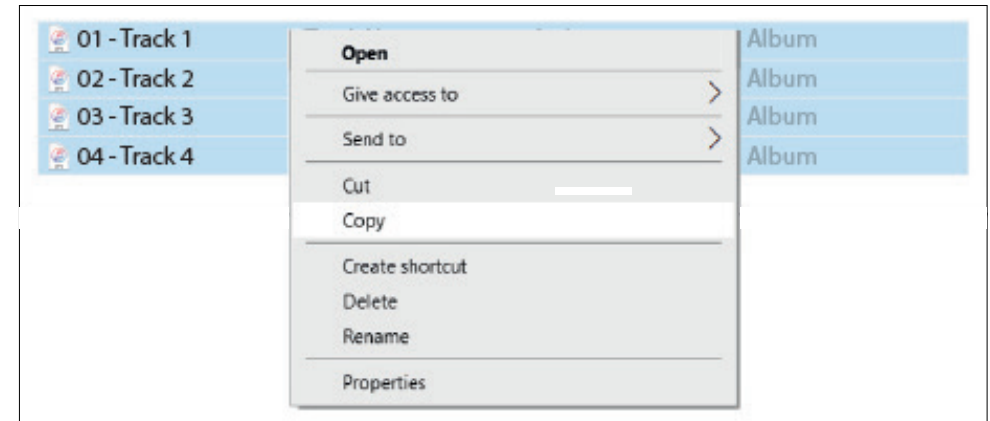


There are replacement labels in your box. Use a new label if you want to change the stations saved to the Memory Buttons.

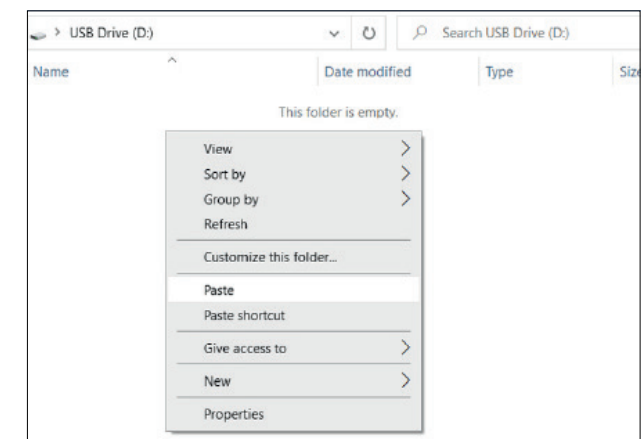
Saving your MP3 files onto your USB memory stick - Downloaded MP3 Audio Files - Windows

1. Save your MP3 files to your 'Desktop', 'Documents' or 'Music' folder. Make sure the files are un-zipped.
2. Click and drag over the MP3 files to select all files.
3. Right click on the **first track** on the playlist. Select 'Copy' from the drop-down menu.

01 - Track 1	Track Name 1	Artist 1	Album
02 - Track 2	Track Name 2	Artist 1	Album
03 - Track 3	Track Name 3	Artist 1	Album
04 - Track 4	Track Name 4	Artist 1	Album

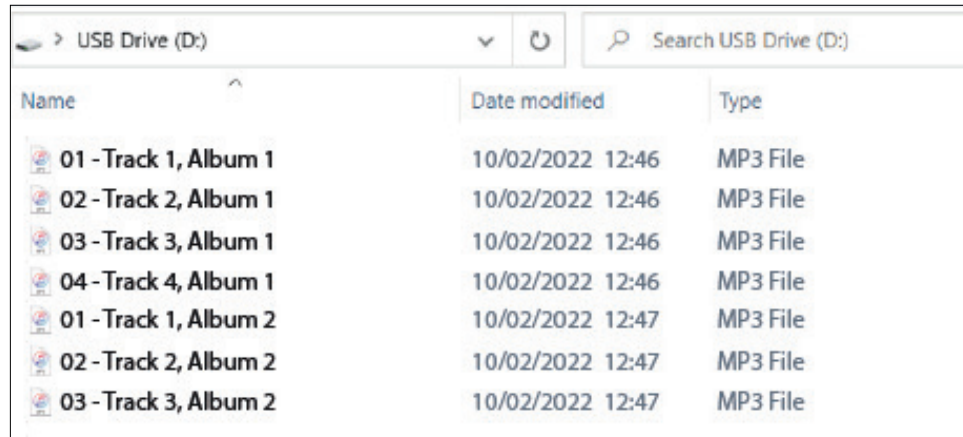


4. Insert the USB memory stick (included in your Radio box) into the USB port on your computer.
5. Open the USB memory stick drive folder.
6. Right click inside the window, and select 'Paste' from the drop-down menu. Wait until the files have finished uploading.



Saving your MP3 files onto your USB memory stick - Downloaded MP3 Audio Files - Windows CD Drive

7. Repeat the process to add more MP3 music.



Name	Date modified	Type
01 - Track 1, Album 1	10/02/2022 12:46	MP3 File
02 - Track 2, Album 1	10/02/2022 12:46	MP3 File
03 - Track 3, Album 1	10/02/2022 12:46	MP3 File
04 - Track 4, Album 1	10/02/2022 12:46	MP3 File
01 - Track 1, Album 2	10/02/2022 12:47	MP3 File
02 - Track 2, Album 2	10/02/2022 12:47	MP3 File
03 - Track 3, Album 2	10/02/2022 12:47	MP3 File

8. When you have uploaded your music, eject the USB safely.

9. Ensure the Relish Radio is in Standby mode by pressing the 'Off' button on the top of the product.

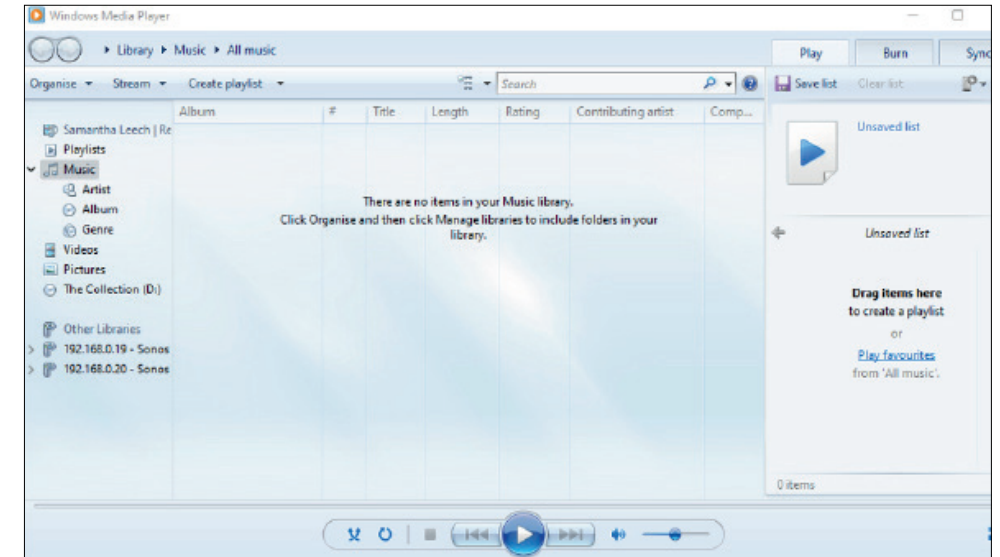
10. Remove the battery door, and insert the USB memory stick into the USB socket. Replace the battery door.

11. Switch on the Relish Radio by pressing the 'On' button on the top of the product. Press the 'My Playlist' button to play your playlist.

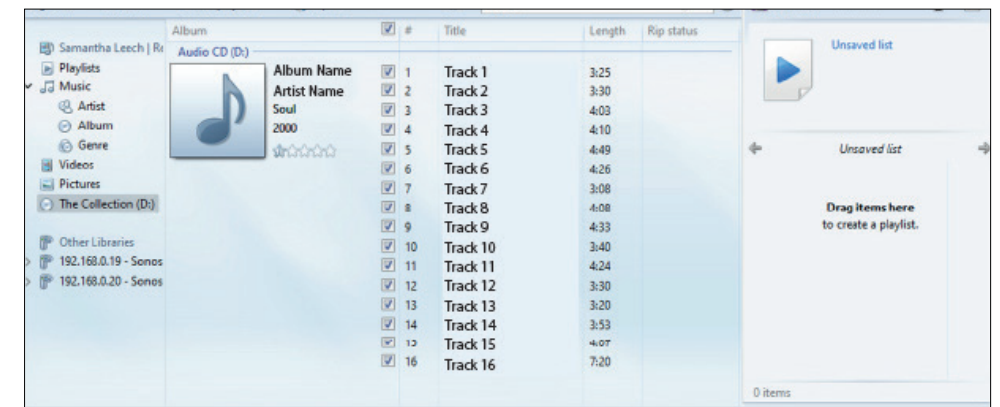
If the radio is switched off or tuned to a radio station mid-way during an MP3 playlist track, it will resume from the start of the track when 'My Playlist' is next selected.

12. Should you ever remove the USB memory stick, please press the 'Off' button to put the product into standby mode beforehand.

1. Open Windows Media Player.

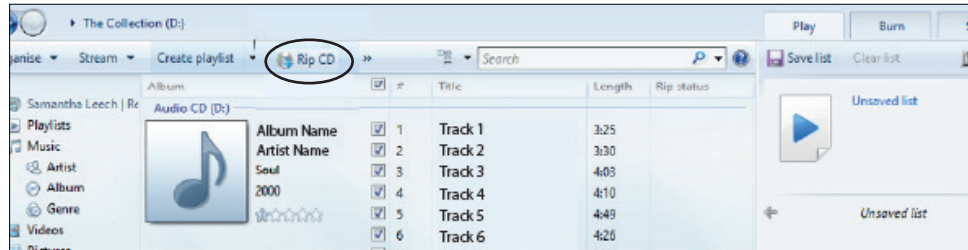


2. Click the D drive on the media player to view all the tracks on the CD.



3. All tracks will default as selected. If you wish to choose only a few tracks, untick those you don't want.

4. Click on 'Rip CD' on the tool bar.



5. Select the correct copyright option in the 'Rip Options' pop-up window.

6. The tracks will 'Rip' to your music files. Open up the Files icon on the toolbar, click on My PC folder to locate the Music folder – all the tracks will be here. Open up individual folders to see all the tracks.

7. Click and drag over the MP3 files to select all files.

8. Right click on the **first track** on the playlist. Select 'Copy' from the drop-down menu.

9. Insert the USB memory stick (included in your Radio box) into the USB port on your computer.

10. Open the USB memory stick drive folder.

11. Right click inside the window, and select 'Paste' from the drop-down menu. Wait until the files have finished uploading.

12. When you have uploaded your music, eject the USB safely.

13. Ensure the Relish Radio is in Standby mode by pressing the 'Off' button on the top of the product.

14. Remove the battery door, and insert the USB memory stick into the USB socket. Replace the battery door.

Saving your MP3 files onto your USB memory stick - MP3 Audio Files From CD - Mac OS

1. Follow these instructions to import audio files from CDs in MP3 format:
<https://support.apple.com/en-gb/guide/music/mus2965/mac>

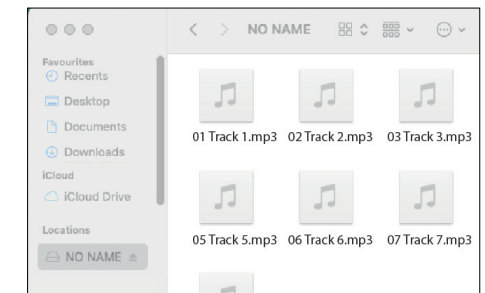
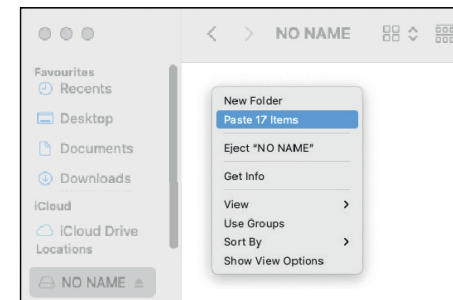
2. Locate the MP3 files on your computer.

3. Click and drag over the MP3 files to select all files. Right click on the **first track** on the playlist. Select 'Copy' from the drop-down menu.

4. Insert a formatted USB memory stick into the USB port on your computer.

5. Open the USB memory stick drive folder.

6. Right click inside the window, and select 'Paste' from the drop-down menu. Wait until the files have finished uploading. The files should now be copied to the USB memory stick (see images).



7. Repeat the process to add more MP3 music.

8. Ensure the Relish Radio is in Standby mode by pressing the 'Off' button on the top of the product.

9. Remove the battery cover, and insert the USB memory stick into the USB socket. Replace the battery door.

10. Switch on the Relish Radio by pressing the 'On' button on the top of the product. Press the 'My Playlist' button to play your playlist. If the radio is switched off or tuned to a radio station mid-way during an MP3 playlist track, it will resume from the start of the track when 'My Playlist' is next selected.

11. Should you ever remove the USB memory stick, please press the 'Off' button to put the product into standby mode beforehand.

Please note, this product is not full supported by Mac OS. Files will play, but playlist issues may occur. Format in Windows for a more reliable result.

Safety Instructions

To prevent damage to your radio or possible injury to you or others, read these safety precautions and instructions entirely before applying power to your radio.

Please read IMPORTANT SAFETY INSTRUCTIONS before use. It is important to read and understand all instructions. Keep those precautions and instructions where all who will use this radio will read them.

WARNING: To prevent fire or electric shock hazard do not expose this product to rain or moisture.



CAUTION: To reduce the risk of electric shock, do not remove the radio back. No user serviceable parts inside. Refer servicing to qualified service personnel.



The lightning flash and arrowhead within the triangle is a warning sign alerting you to "Dangerous Voltage" inside the radio.



The exclamation point within the triangle is a warning sign alerting you of important instructions accompanying this radio.

CAUTION:

- Before turning the unit on, set your volume control to a low setting.
- Slowly increase the sound until you can hear it comfortable and clearly without distortion.
- Long-term exposure to loud sounds may cause hearing damage. It is best to avoid high volume levels when using headphones/earbuds, especially for extended periods.

1. COMMON CARE!

Check the radio, AC adaptor, and any accessories regularly. Do not use the radio if there is any sign of damage. Only operate in accordance with the instructions in this manual.

2. DISCONNECT THE RADIO IN CASE OF MALFUNCTION!

If you smell or notice smoke, disconnect the AC adaptor immediately to avoid burns. Contact C. Crane for inspection and service before any future operation. Only use the AC adaptor supplied with the unit and replace it if wires become frayed or exposed.

3. KEEP OUT OF REACH OF CHILDREN!

Use only on a stable, level surface. Dropping the radio can cause damage or injury. Keep the AC Adaptor cord in a position so someone cannot trip and cause the radio to fall.

4. KEEP AWAY FROM WATER AND MOISTURE!

Keep the radio dry. Liquids and moisture can damage the radio. If a liquid leaks into the radio do not operate and seek a qualified service shop. To clean, remove the power adaptor and use a damp cloth on the exterior only.

5. KEEP AWAY FROM EXTREME TEMPERATURES!

Extreme temperatures can damage the radio. Do not leave or use the radio where it can be subjected to high or very cold temperatures.

6. DO NOT ATTEMPT TO SERVICE RADIO!

Refer all service work to a qualified service shop when the radio does not appear to operate normally, exhibits a change in performance or the radio has received damage. Never open the radio as this may expose you to dangerous voltages and this will void all warranties.

Specifications

Input: 100-240V AC 50/60Hz

Output: 5.9V DC 1.5A

Power Consumption: 8.85W

Speakers: 2 x 3W drivers

Battery: 4 x Type D (not included)

Headphone output: 3.5mm

USB Playback: MP3

Dimensions: 245 x 108 x 182 mm

DAB/DAB+/FM Radio with MP3 Frequency: 174.928MHz(5A) - 239.200MHz(13F)

FM Frequency: 87.5 - 108MHz

Operational Temperature:

Between 0°C to 40°C (32°F to 104°F)

Registration Design:

UK - 6137034, 6137035

EU - 008539993-0001
- 008539993-0002

US - D999185, D1001766

AUS - 202117029

Warranty Registration

This Limited Warranty is extended to the original end-user purchaser or the person receiving the product as a gift. It can be transferred provided the current owner furnishes the original proof of purchase from an authorised Relish store or reseller. Unless a different warranty period is stated at the time of purchase, and evidence of this can be proven, your Relish product is covered for a period of 2 years from the date of retail purchase by the original end-use purchaser.



Correct disposal of this product - this marking indicates that this product should not be disposed with other household wastes throughout the EU.

To prevent possible harm to the environment or human health from uncontrolled waste disposal, recycle it responsibly to promote the sustainable reuse of material resources.

FCC Warning Statement

Changes or modifications not expressly approved by the party responsible for compliance could void the user's authority to operate the equipment. This equipment has been tested and found to comply with the limits for a Class B digital device, pursuant to Part 15 of the FCC Rules. These limits are designed to provide reasonable protection against harmful interference in a residential installation. This equipment generates uses and can radiate radio frequency energy and, if not installed and used in accordance with the instructions, may cause harmful interference to radio communications. However, there is no guarantee that interference will not occur in a particular installation. If this equipment does cause harmful interference to radio or television reception, which can be determined by turning the equipment off and on, the user is encouraged to try to correct the interference by one or more of the following measures:

- Reorient or relocate the receiving antenna.
- Increase the separation between the equipment and receiver.
- Connect the equipment into an outlet on a circuit different from that to which the receiver is connected.
- Consult the dealer or an experienced radio/TV technician for help.

This device complies with part 15 of the FCC Rules. Operation is subject to the following two conditions: (1) This device may not cause harmful interference, and (2) this device must accept any interference received, including interference that may cause undesired operation.



helpis@alliedmedical.co.nz | www.alliedmedical.co.nz | 0800 31 61 81