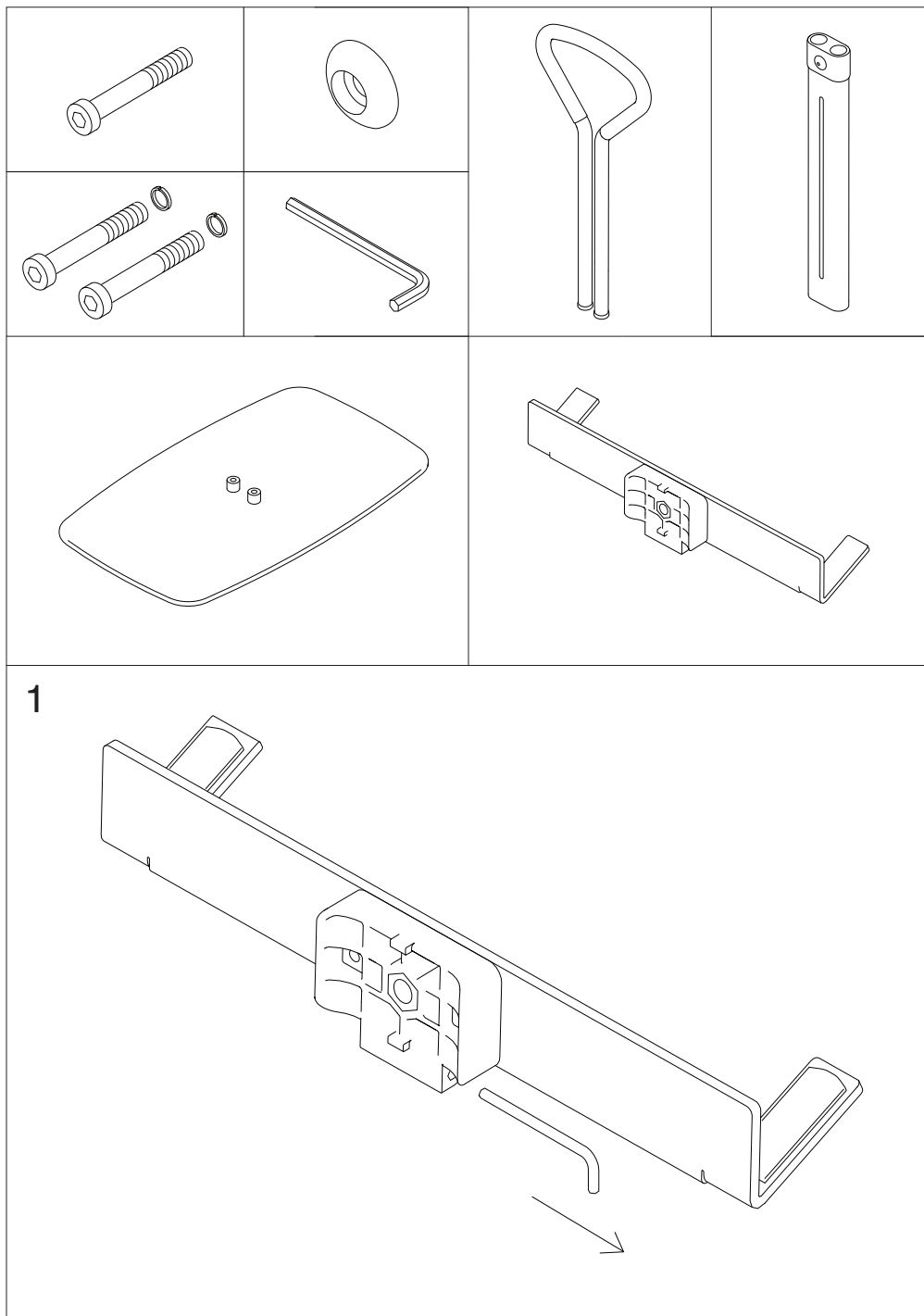
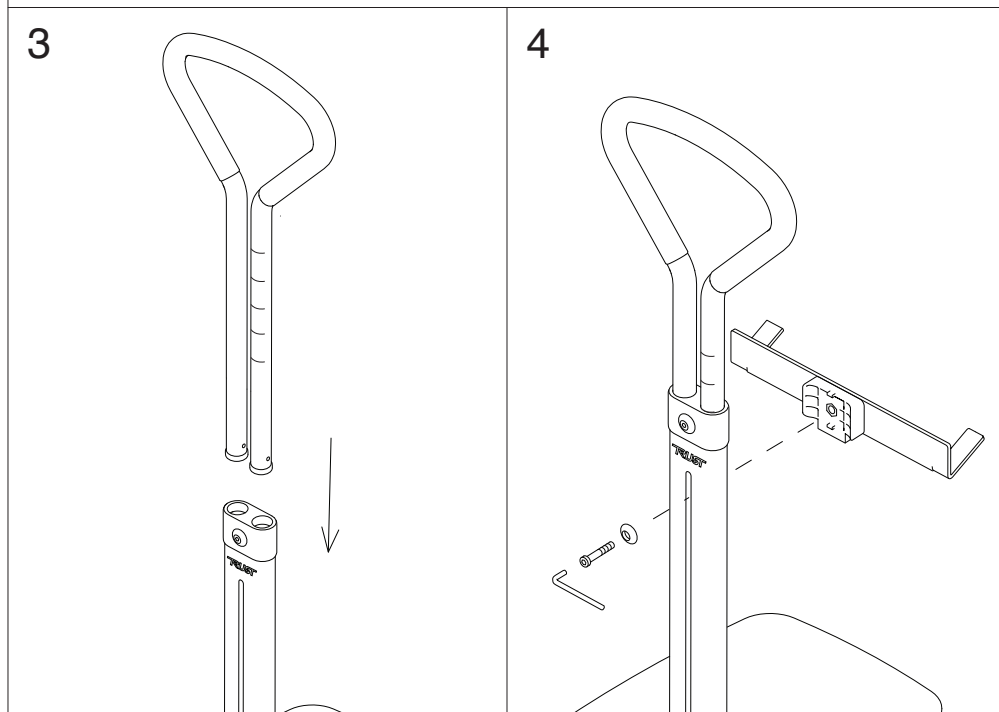
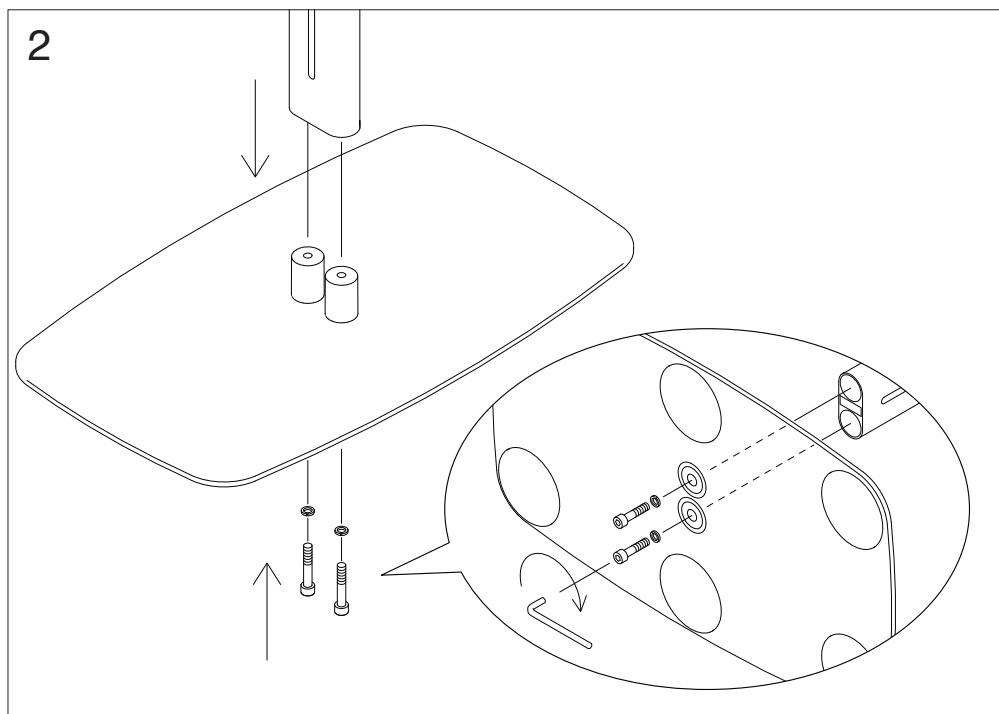


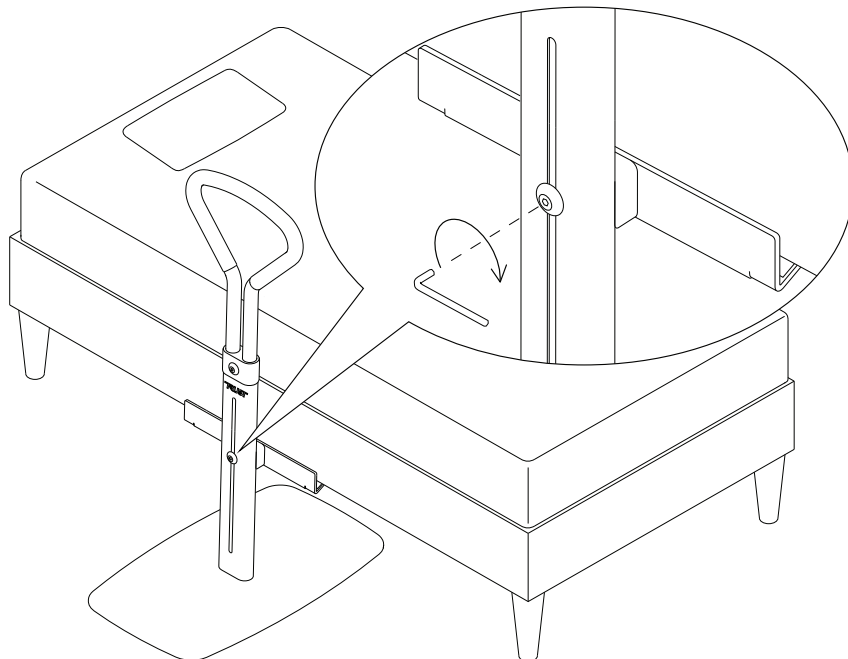


**Let's Get Up**

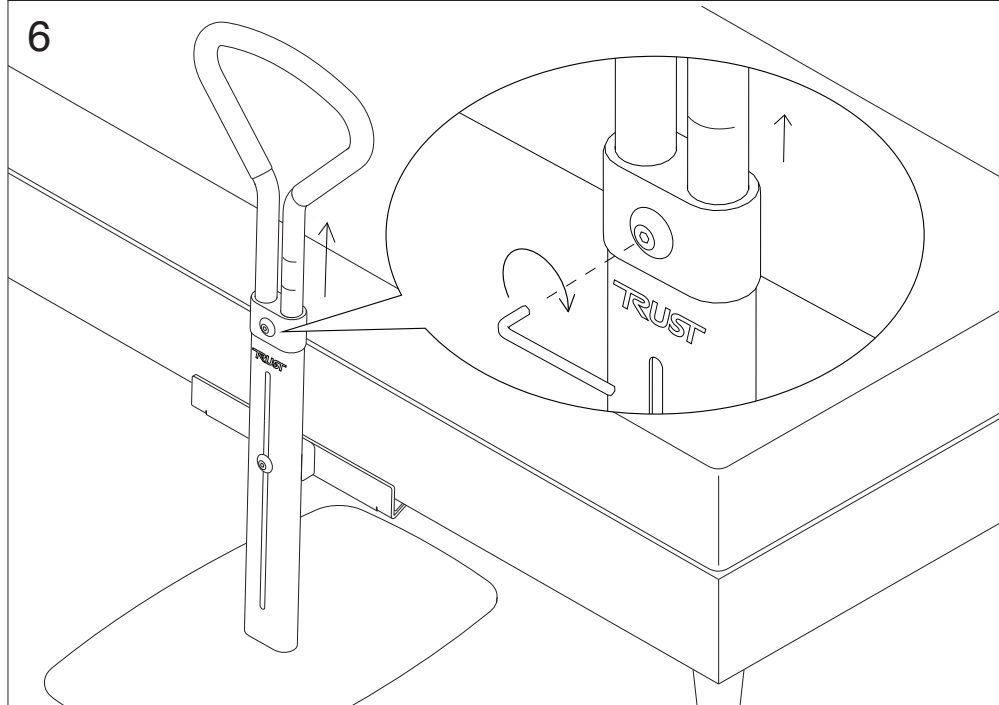




5



6



## ENGLISH

### Let's Get Up. Safety bed handle.

Congratulations on your new safety bed handle that will make your life a little easier, more pleasant and safer. To make it easier for you to get familiar with your product it is important that you study this manual.

Let's Get Up provides protection against accidental falls from the bed and offers you dependable assistance in transitioning to and from the bed.

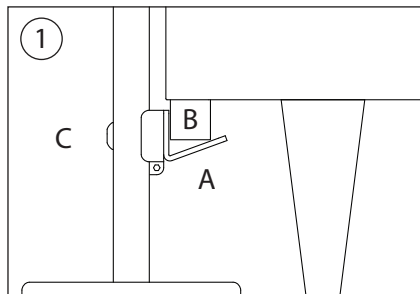
Let's Get Up is equipped with an adjustable bed frame bracket and fits most traditional home and medical beds. Make sure that the frame bracket is correctly mounted before use and that the locking screw is properly tightened – see illustration 1.

The ergonomic handle is covered with soft rubber and can be adjusted in various heights. Do not forget to tighten the locking screw before use – see illustration 2.

To adjust the product, use the included allen key. Once used, the key can be placed back in the smart pocket on the back of the product. See picture 1 on page 2.

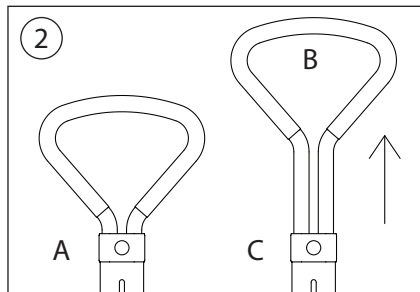
**Maintenance:** Clean with lukewarm water and a little detergent. Don't put the bed handle in hot places or where it is very damp.

**Warranty:** One year manufacturers warranty. It does not cover wear and tear parts like anti slip patches underneath the bottom plate and frame bracket.



#### Bed frame brackets.

1. Adjust the bracket (A) so that it pushes firmly against the bed frame (B).
2. Tighten the screw (C) and make sure that it is properly secured.



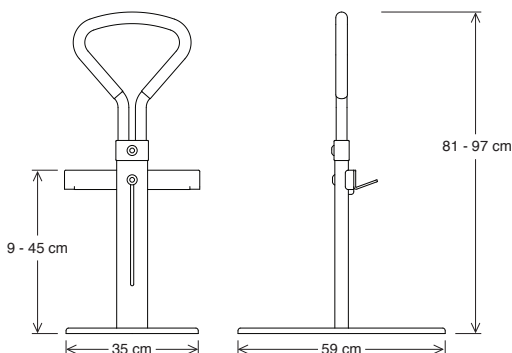
#### Height adjustment.

1. Release the locking mechanism by turning the screw to the left (A).
2. Pull up the handle (B) to the desired height and tighten the screw by turning it to the right (C).

#### Technical specifications:

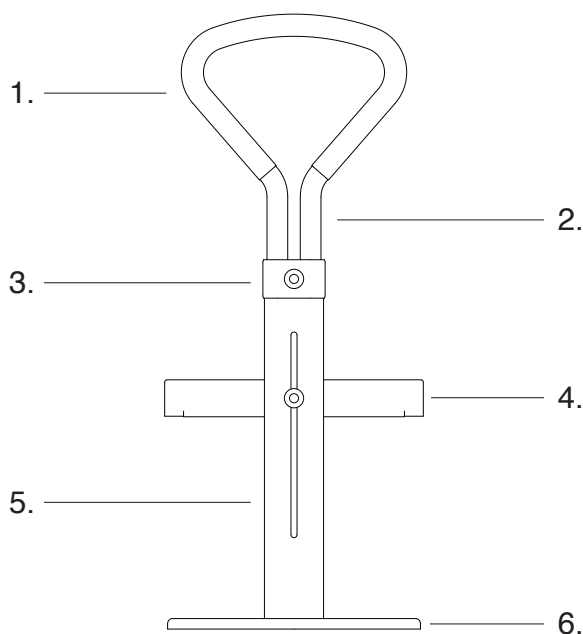
Tested according to ISO 11199-2:2005 for a maximum user weight of 130 kg.

Handle height	81 – 97 cm.
Bed bracket height	9 – 45 cm.
Floor plate length	59 cm.
Floor plate width	35 cm.
Weight	11.9 kg.



## MATERIAL

1. Handgrip - Foam
2. Handle tube - Aluminum
3. Height adjustment cover - Plastic
4. Bed bracket - Steel
5. Bed frame - Aluminum
6. Floor plate - Steel



### Återvinning / Genbrug / Recycling / Recycling / Recycling / Riciclaggio / Recyclage

Denna produkt skall återvinnas i enlighet med nationella riktlinjer.

Dette produkt skal genbruges i overensstemmelse med nationale retningslinjer.

This product should be recycled in accordance with national guidelines.

Dit product moet worden gerecycled in overeenstemming met de nationale richtlijnen.

Dieses Produkt sollte gemäß den nationalen Richtlinien recycelt werden.

Questo prodotto deve essere riciclato in conformità con le linee guida nazionali.

Ce produit doit être recyclé conformément aux directives nationales.

